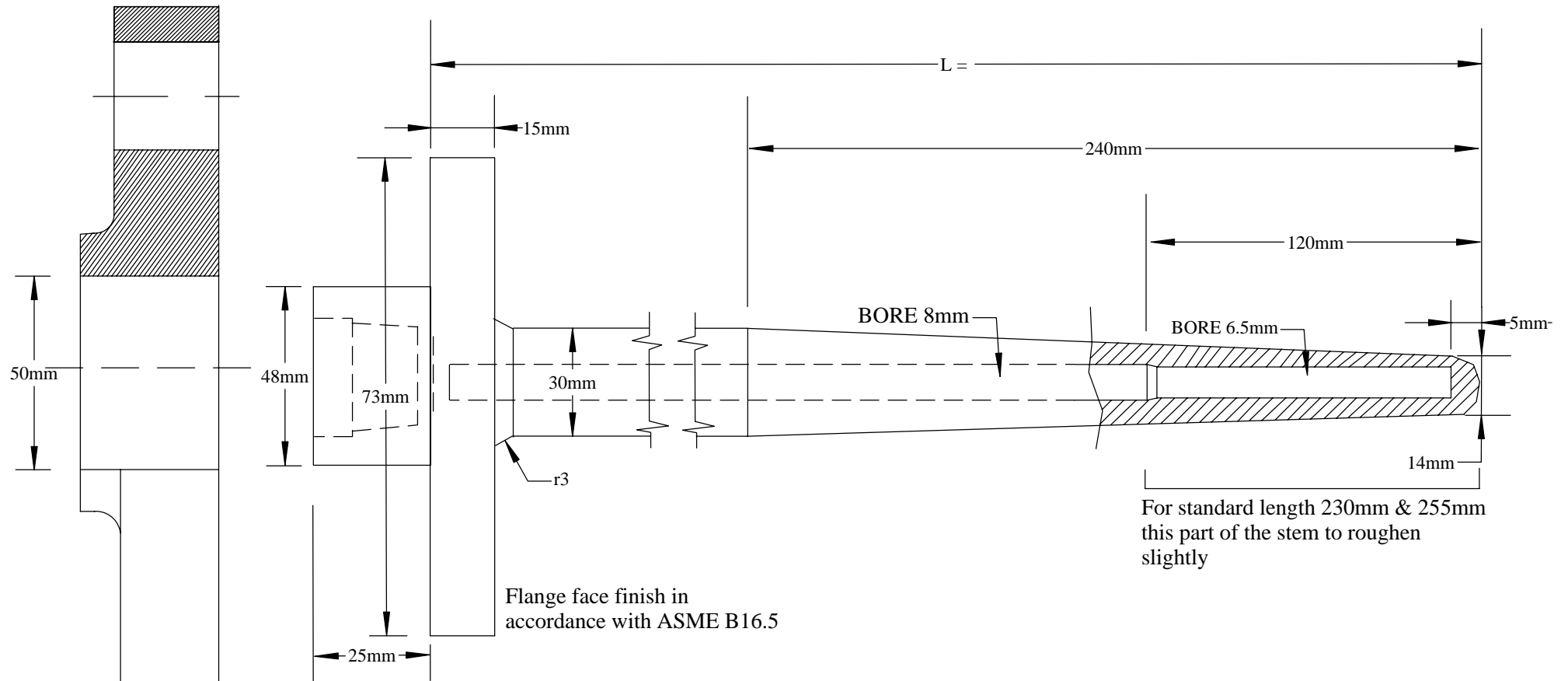


316 S/S FORGED THERMOWELL (EQUIPMENT ONLY)



For standard length 230mm & 255mm
this part of the stem to roughen
slightly

Flange face finish in
accordance with ASME B16.5

Material type, flange rating
& Tag No. stamped on rim

40mm
A105 lap flange

'L' t'well
305mm
355mm
405mm
455mm

Standard Dimensions

TEMPERATURE CONTROLS PTY LTD Certificate No: QEC 14412
AS/NZS 9001:2000

CONDITIONS

THIS DRAWING IS OUR
EXCLUSIVE PROPERTY
AND MUST NOT BE
COPIED OR HANDED
TO ANY OTHER PARTIES
WITH OUT WRITTEN
PERMISSION. IT SHALL
BE RETURNED UPON
REQUEST

SYDNEY : 7 YAMMA ST SEFTON , NSW 2162
PHONE : (02) 9721 8644 FAX : (02) 9738 9339
MELBOURNE : 8/280 Whitehall St
YARRAVILLE VIC 3013
PHONE : (03) 9687 0000 FAX : (03) 9687 1900
EMAIL : sales@temperature.com.au



TITLE

SIZE : A4	DATE :02/05/07	DWG NO : SD 594
SCALE : NTS	DRAWING BY K.F	REV : 00